



# A state-of-the-art warship for the Royal Navy, A UK export for global navies



## Overview

The Type 31 frigate will become the cornerstone of the Royal Navy's surface fleet, enabling a UK warship presence right across the globe.

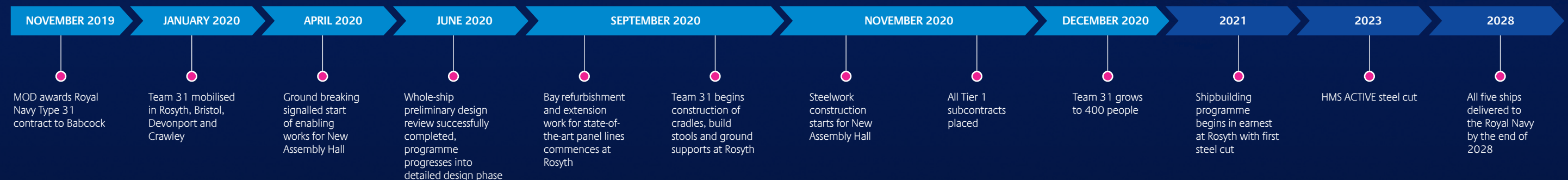
A truly state-of-the-art warship, the modular, scalable and proven design has been engineered to minimise through-life costs.

Assembled at Rosyth, the programme will maximise social value throughout the UK maritime supply chain.

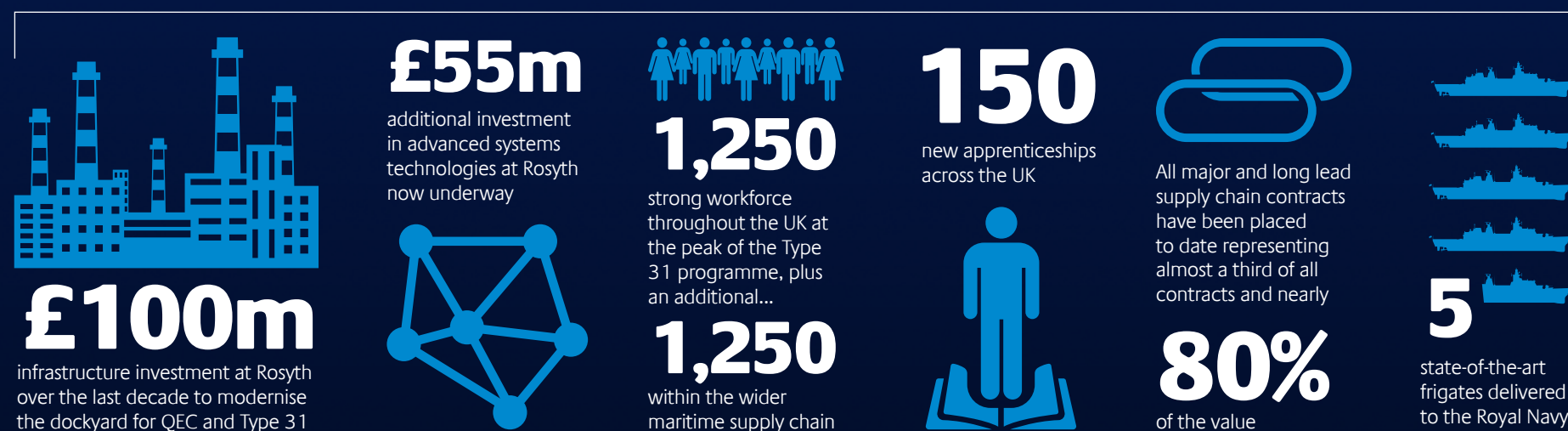
## KEY CHARACTERISTICS

Overall length	138.7m
Beam, maximum	19.8m
Design draft	5.0m
Displacement	6,000+te
Main engine power	32+MW
Max speed	28+knots
Fuel range	>7000nm
Endurance	1-2 months
Propulsion	CODAD, 2 x CPP

## The Story So Far



## Type 31 In Numbers



## Made in the UK

Building on the success of the Aircraft Carrier Alliance, Team31 brings together the best of the UK's shipbuilding capability and supply chain from across the UK.

